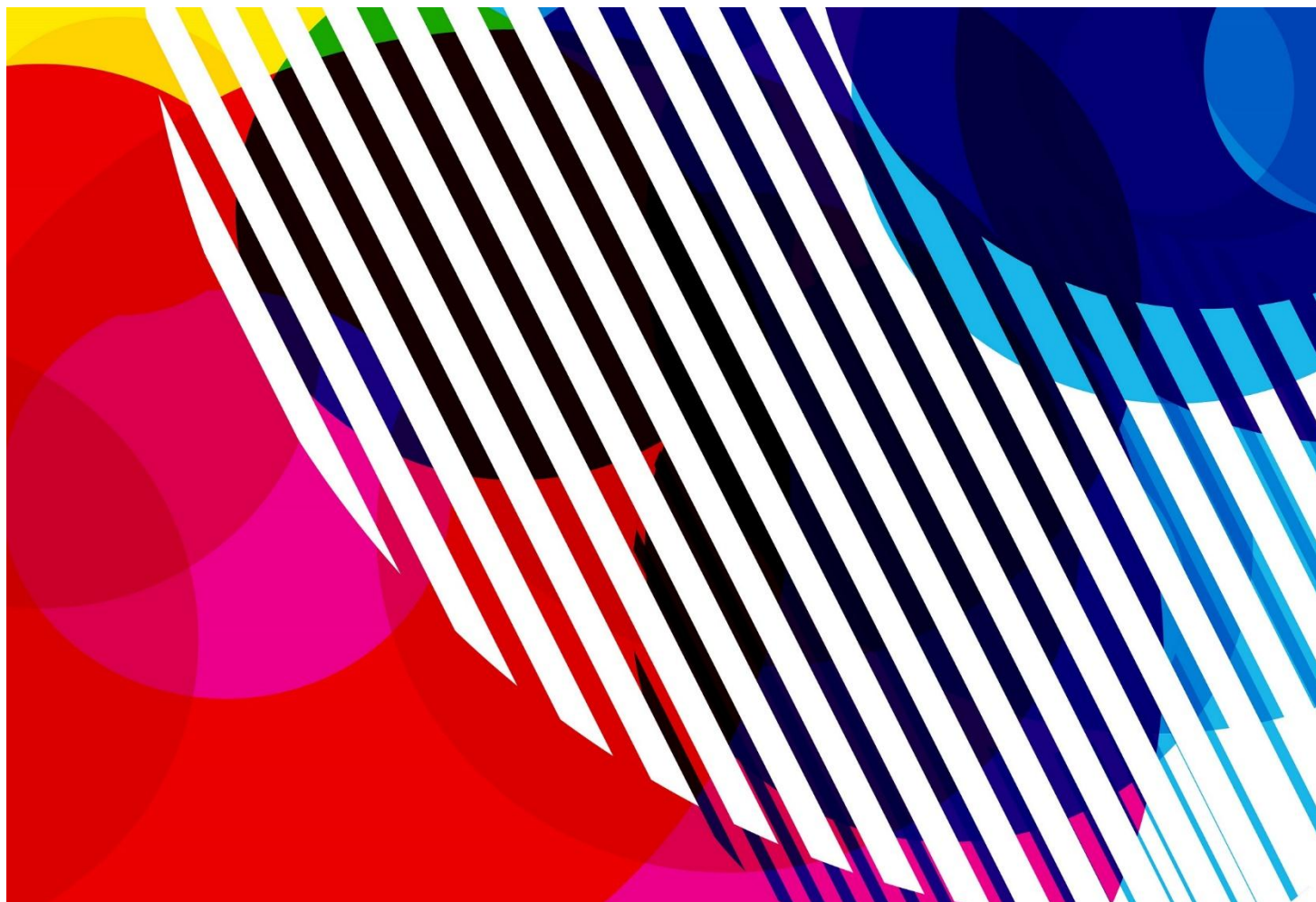


IWF

INTERNATIONAL
WEIGHTLIFTING
FEDERATION

TECHNICAL
OFFICIALS
EXAMINATION -
ANSWERS



IWF TECHNICAL OFFICIALS' EXAMINATION

– ANSWERS

Q.1	b	Q.2	c		
Q.3	Junior = 15 to 20		Youth = 13 to 17		
Q.4	c	Q.5	False	Q.6	b
Q.7	b	Q.8	b		
Q.9	15 (Senior World Championships)				
	15 (Junior World Championships)				
	13 (Youth World Championships)				
Q.10	b	Q.11	c		
Q.12	48	53		58	
	63	69		75	
	+75				
Q.13	c	Q.14	True	Q.15	b
Q.16	56	62		69	
	77	85		94	
	105	+105			
Q.17	c	Q.18	c	Q.19	a
Q.20	b	Q.21	a	Q.22	b
Q.23	a	Q.24	a	Q.25	False
Q.26	400 (Width)	400 (Length)		10 (Height)	
Q.27	20 (Men's bar)	15 (Women's bar)		2.5 (1 Collar)	
Q.28	c	Q.29	a		
Q.30	Red (25kg)	Blue (20kg)		Yellow (15kg)	
	Green (10kg)	White (5kg)		Red (2.5kg)	
	Blue (2kg)	Yellow (1.5kg)		Green (1kg)	
	White (0.5kg)				
Q.31	c	Q.32	b	Q.33	c
Q.34	True	Q.35	a	Q.36	c
Q.37	b	Q.38	b	Q.39	b
Q.40	a	Q.41	c	Q.42	True
Q.43	b	Q.44	b	Q.45	a
Q.46	False	Q.47	c	Q.48	a
Q.49	a	Q.50	c	Q.51	b
Q.52	a	Q.53	b		
Q.54	10				
Q.55	c	Q.56	c	Q.57	a

Q.58	a	Q.59	a	Q.60	b
Q.61	b	Q.62	b	Q.63	c
Q.64	b	Q.65	b	Q.66	c
Q.67	b	Q.68	a	Q.69	a
Q.70	b	Q.71	b	Q.72	True
Q.73	Technical Controller			Q.74	c
Q.75	c	Q.76	Jury	Q.77	b
Q.78	a	Q.79	a	Q.80	a
Q.81	c	Q.82	c	Q.83	c
Q.84	b	Q.85	Technical Controller		
Q.86	c	Q.87	c	Q.88	a
Q.89	False	Q.90	b	Q.91	True
Q.92	b	Q.93	b	Q.94	a
Q.95	a	Q.96	b	Q.97	b
Q.98	a	Q.99	See below		
Q.100	(S) See below		(C&J) See below		(T) See below

- **Q.3, Q.9, Q.12, Q.16, Q.26, Q.27, Q.30, Q.99, Q.100:** 2 points for a complete answer, 1 point for 1 mistake, 0 point for 2 mistakes or more.
- **Other questions:** 1 point for each question.

Your percentage = (your points / 109) * 100

IWF

Answers for optional questions (Q.99 and Q.100)

M56kg Previous World Records: S:138 J:168 T:305

B Group

Competition 12:00

Lot	Name	BW	Snatch			C&J			Best					
			1	2	3	1	2	3	S	Place	C&J	Place	Total	Place
5	A	56.00	135	138	140	164	167	169	140	3	169	2	309	1
40	B	56.00	135	138	X 140	164	168	169	138	5	169	5	307	5
44	C	56.00	135	140	X 141	164	167	169	140	2	169	3	309	2

A Group

Competition 18:00

Lot	Name	BW	Snatch			C&J			Best					
			1	2	3	1	2	3	S	Place	C&J	Place	Total	Place
1	D	56.00	140	X 142	X 142	164	168	169	140	1	169	4	309	3
99	E	56.00	135	138	X 141	165	169	X 170	138	6	169	1	307	4
42	F	56.00	135	138	140	X 165	165	X 169	140	4	165	6	305	6

New World Record holder	C (S)	A (C&J)	A (T)
-------------------------	--------------	--------------------	--------------

M62kg Previous World Records: S:137 J:172 T:308

B Group

Competition 12:00

Lot	Name	BW	Snatch			C&J			Best					
			1	2	3	1	2	3	S	Place	J	Place	Total	Place
5	A	62.00	134	140	X 142	160	164	X 167	140	3	164	6	304	6
99	B	62.00	140	X 142	X 142	165	171	X 173	140	2	171	3	311	1
44	C	62.00	130	135	138	165	173	X 175	138	5	173	2	311	3

A Group

Competition 18:00

Lot	Name	BW	Snatch			C&J			Best					
			1	2	3	1	2	3	S	Place	J	Place	Total	Place
1	D	62.00	134	137	140	X 165	165	X 166	140	4	165	5	305	5
40	E	62.00	140	X 142	X 142	165	X 173	X 173	140	1	165	4	305	4
42	F	62.00	130	136	138	165	173	X 175	138	6	173	1	311	2

New World Record holder	B (S)	C (C&J)	B (T)
-------------------------	--------------	--------------------	--------------

W48kg Previous World Records: S:98 J:119 T:217**B Group****Competition 12:00**

Lot	Name	BW	Snatch			C&J			Best					
			1	2	3	1	2	3	S	Place	C&J	Place	Total	Place
44	A	48.00	X 98	98	X 100	X 115	115	X 120	98	5	115	6	213	6
99	B	48.00	95	98	100	118	X 120	120	100	3	120	3	220	3
5	C	48.00	97	100	X 101	X 118	118	120	100	2	120	2	220	2

A Group**Competition 18:00**

Lot	Name	BW	Snatch			C&J			Best					
			1	2	3	1	2	3	S	Place	C&J	Place	Total	Place
1	D	48.00	96	98	100	115	120	X 122	100	4	120	1	220	1
42	E	48.00	93	96	98	X 115	115	X 120	98	6	115	5	213	5
40	F	48.00	96	100	X 102	115	X 120	X 120	100	1	115	4	215	4

New World Record holder	C (S)	C (C&J)	C (T)
-------------------------	--------------	--------------------	--------------

M+105kg Previous World Records: S213: J:263 T:472**B Group****Competition 12:00**

Lot	Name	BW	Snatch			C&J			Best					
			1	2	3	1	2	3	S	Place	C&J	Place	Total	Place
5	A	150.00	X 210	210	214	256	260	X 264	214	3	260	6	474	4
99	B	150.00	X 210	210	214	255	260	264	214	4	264	2	478	2
42	C	150.00	210	212	X 214	255	260	X 264	212	5	260	5	472	6

A Group**Competition 18:00**

Lot	Name	BW	Snatch			C&J			Best					
			1	2	3	1	2	3	S	Place	C&J	Place	Total	Place
1	D	150.00	210	214	X 215	260	X 264	264	214	2	264	3	478	3
40	E	150.00	210	X 212	212	255	260	X 264	212	6	260	4	472	5
44	F	150.00	214	X 216	X 216	260	264	X 265	214	1	264	1	478	1

New World Record holder	A (S)	B (C&J)	B (T)
-------------------------	--------------	--------------------	--------------

W75kg Previous World Records: S:130 J:159 T:286

B Group

Competition 12:00

Lot	Name	BW	Snatch			C&J			Best					
			1	2	3	1	2	3	S	Place	C&J	Place	Total	Place
99	A	75.00	128	X 131	131	154	157	160	131	3	160	5	291	3
5	B	75.00	126	128	130	155	159	161	130	5	161	3	291	5
44	C	75.00	128	130	X 131	158	161	X 162	130	4	161	2	291	4

A Group

Competition 18:00

Lot	Name	BW	Snatch			C&J			Best					
			1	2	3	1	2	3	S	Place	C&J	Place	Total	Place
1	D	75.00	128	131	X 132	158	161	X 162	131	1	161	1	292	1
40	E	75.00	126	X 130	130	155	157	160	130	6	160	6	290	6
42	F	75.00	128	131	X 132	X 160	160	X 162	131	2	160	4	291	2

New World Record holder	A (S)	C (C&J)	D (T)
-------------------------	--------------	--------------------	--------------

